

**ENHANCE DIGITAL TEACHING PLATFORM**  
Pathway: Addressing the knowledge agenda

# INTRODUCTION

Technology has an important contribution to make in the practical application of new approaches.

Recent pedagogical approaches bring together the findings of cognitive science with research into educational practice and outcomes to improve the effectiveness of teaching and learning. The notion of acquiring and retaining knowledge sits at the heart of these theories.

Technology has an important contribution to make in the practical application of new approaches and the Enhance modules contain a number which explore the opportunities and practicalities of changing practice.

The new approaches have an impact at a number of levels.

**This pathway looks at:**

- ▶ Core ideas and frameworks
- ▶ Effective learning in the classroom.



# CORE IDEAS AND FRAMEWORKS

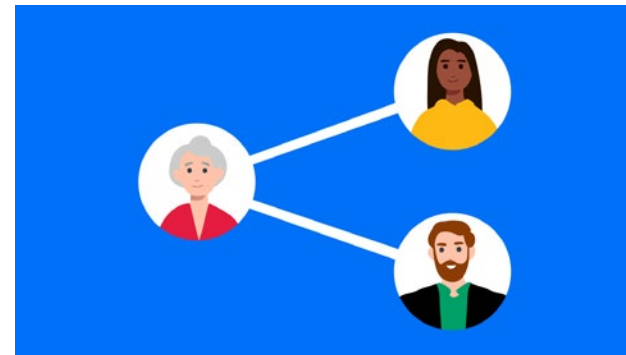
The first module looks at Barak Rosenshine's highly influential principles of instruction, summarised in four stages, and the place of technology in supporting them. The second looks at the application of metacognition to learning and its impact on improving outcomes. The next two paired modules observe how modern cognitive and pedagogical theory plays out in the work of a single teacher, in the classroom and beyond it.



## Module 1

### Planning for teaching with technology

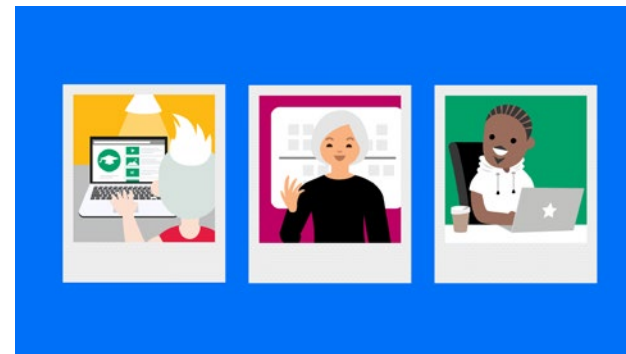
[Discover module >](#)



## Module 2

### Delivering effective learning with technology

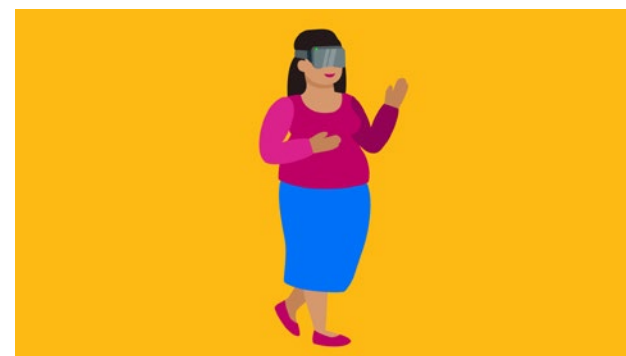
[Discover module >](#)



## Module 3

### New forms and formats for Blended Learning

[Discover module >](#)



## Module 4

### New forms and formats for face-to-face teaching and learning

[Discover module >](#)

# EFFECTIVE LEARNING IN THE CLASSROOM

The first two modules in the set explore a simple model of face-to-face interactions with learners that gives you a way to think about and classify the technology you use in this context. **Technology, personalisation and effective learning** looks at the application of Rosenshine's principles and cognitive theory in practice. The final module looks at ways in which an understanding of metacognition can underpin and add value to an activity.



## Module 1

### Face-to-face learning 1: The four Ms

[Discover module >](#)



## Module 2

### Face-to-face learning 2: Using class technology

[Discover module >](#)



## Module 3

### New forms and formats for Blended Learning

[Discover module >](#)



## Module 4

### Best tool for the job

[Discover module >](#)

# REFLECTION

As you go through the pathway you may want to consider the following questions:

1. How do I currently plan, structure and deliver sessions?
2. Can I identify three topics or sessions that I could try to deliver in accordance with Rosenshine's principles and incorporating other ideas to be found in these modules?
3. Can I map out or describe my own practice in a session or topic in the way the teacher does in Technology, personalisation and effective learning? If I compare and contrast them, what improvements could I pick up from him – and what might he gain from my practice?
4. What additional skills or knowledge, including technical upskilling, do I need before trying to apply some of these ideas into my own approach to teaching and learning?

